

This is a reprint from the World Conference on Lung Cancer 2025 (WCLC 2025), which was originally presented in Barcelona, Spain on September 6-9, 2025; the references to “Merck” or “Merck KGaA” within refer to (1) Merck KGaA, Darmstadt, Germany; (2) an affiliate of Merck KGaA, Darmstadt, Germany; or (3) one of the businesses of Merck KGaA, Darmstadt, Germany, which operate as EMD Serono in the healthcare, MilliporeSigma in the life science and EMD Electronics in the electronics business in the U.S. and Canada. There are two different, unaffiliated companies that use the name “Merck”. Merck KGaA, Darmstadt, Germany, which is providing this content, uses the firm name “Merck KGaA, Darmstadt, Germany” and the business names EMD Serono in the healthcare, MilliporeSigma in the life science and EMD Electronics in the electronics business in the U.S. and Canada. The other company, Merck & Co., Inc. holds the rights in the trademark “Merck” in the U.S. and Canada. Merck & Co., Inc. is not affiliated with or related to Merck KGaA, Darmstadt, Germany, which owns the “Merck” trademark in all other countries of the world.

Materials obtained through this Quick Response (QR) Code are for personal use only and may not be reproduced without the written permission from the author of this poster.

Correspondence:
n.reinmuth@asklepios.com

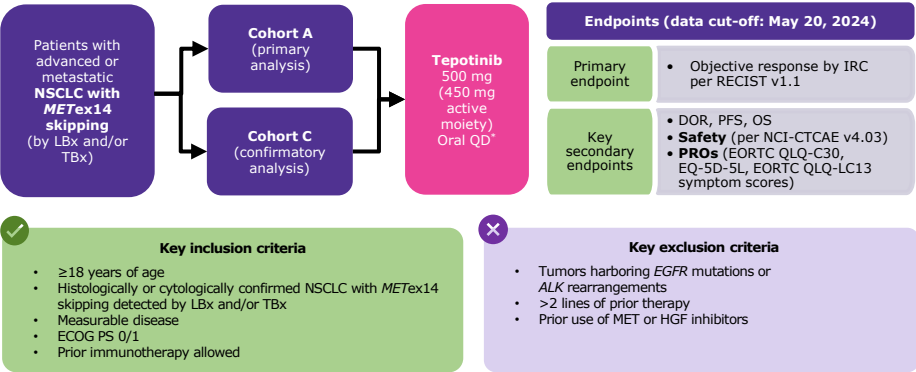
Safety and Patient-Reported Outcomes with Tepotinib in Patients with *MET*ex14 Skipping NSCLC: ≥3-years Follow-Up of VISION

Enriqueta Felip¹, Roberto Ferrara^{2,3}, Remi Veillon⁴, Xiuning Le⁵, Egbert F. Smit⁶, Julien Mazières⁷, Alexis B. Cortot⁸, Jo Raskin⁹, Michael Thomas^{10,11}, **Niels Reinmuth**¹², James Chih-Hsin Yang¹³, Myung-Ju Ahn¹⁴, Jun Zhao¹⁵, Frank Griesinger¹⁶, Santiago Viteri¹⁷, Erica Velthuis¹⁸, Chris Pescott¹⁹, Andreas Johné²⁰, Rolf Bruns²¹, Paul K. Paik²²

¹Department of Oncology, Vall d'Hebron Institute of Oncology (VHIO), Barcelona, Spain; ²Fondazione IRCCS Istituto Nazionale dei Tumori di Milano, Milan, Italy; ³Università Vita-Salute San Raffaele Milano, Milan, Italy; ⁴CHU Bordeaux, service des maladies respiratoires, Bordeaux, France; ⁵Department of Thoracic Head and Neck Medical Oncology, The University of Texas MD Anderson Cancer Center, Houston, TX, USA; ⁶Department of Pulmonary Diseases, Leiden University Medical Centre, Leiden, Netherlands; ⁷CHU de Toulouse, Université Paul Sabatier, Toulouse, France; ⁸Univ. Lille, CHU Lille, CNRS, Inserm, Institut Pasteur de Lille, UMR9020 - UMR-S 1277 - Canther, F-59000 Lille, France; ⁹Department of Pulmonology and Thoracic Oncology, Antwerp University Hospital (UZA), Edegem, Belgium; ¹⁰Department of Thoracic Oncology, Thoraxklinik, Heidelberg University Hospital and National Center for Tumor Diseases (NCT), NCT Heidelberg, a partnership between NCT and Heidelberg University Hospital, Heidelberg, Germany; ¹¹Translational Lung Research Center Heidelberg (TLRC-H), Member of the German Center for Lung Research (DZL), Heidelberg, Germany; ¹²Haskelgo Clinic, Munich-Garching, Department of Thoracic Oncology, Gauting, Germany; ¹³Department of Medical Oncology, National Taiwan University Cancer Center, Taipei, Taiwan; ¹⁴Section of Hematology-Oncology, Department of Medicine, Samsung Medical Center, Sungkyunkwan University School of Medicine, Seoul, South Korea; ¹⁵Key Laboratory of Carcinogenesis and Translational Research (Ministry of Education (Beijing)), Department of Thoracic Oncology, Peking University Cancer Hospital and Institute, Beijing, China; ¹⁶Plus-Hospital, University Medicine Oldenburg, Department of Hematology and Oncology, University Department Internal Medicine-Oncology, Oldenburg, Germany; ¹⁷Instituto Oncológico Dr Rosell, Hospital Universitario Dexeus, Grupo Quiron Salud, Barcelona, Spain; ¹⁸Global Program Safety Lead, Merck KGaA, Schiphol-Rijk, Netherlands, an affiliate of Merck KGaA; ¹⁹Global Value Demonstration, Merck Healthcare KGaA, Darmstadt, Germany; ²⁰Global Clinical Development, Merck Healthcare KGaA, Darmstadt, Germany; ²¹Department of Biostatistics, Merck Healthcare KGaA, Darmstadt, Germany; ²²Thoracic Oncology Service, Memorial Sloan-Kettering Cancer Center, New York, NY, USA.

SUPPLEMENTARY RESULTS

Supplementary Figure S1. Study design, endpoints, and eligibility criteria of VISION



*Treatment continues until disease progression, intolerable toxicity, or withdrawal of consent.

Supplementary Table S1. Baseline characteristics

Parameter		Cohort A+C (N=313)
Sex, n (%)	Male	154 (49.2)
	Female	159 (50.8)
Race*, n (%)	White	195 (62.3)
	Asian	106 (33.9)
	Black/African American	3 (1.0)
Age, years	Median (range)	72.0 (41–94)
	Adenocarcinoma	252 (80.5)
Histology [†] , n (%)	Squamous	28 (8.9)
	Sarcomatoid	10 (3.2)
Smoking history [‡] , n (%)	No	154 (49.2)
	Yes	149 (47.6)
	0	81 (25.9)
ECOG PS [§] , n (%)	1	231 (73.8)
	1L	164 (52.4)
Line of treatment, n (%)	2L+	149 (47.6)

*Nine patients had race reported as 'other' or was missing. [†]21 patients had other histologies and two were missing. [‡]Smoking history was missing for 10 patients. [§]One patient had ECOG PS 2.

Abbreviations: 1L, first line; 2L+, second- or later line; ALK, anaplastic lymphoma kinase; DOR, duration of response; ECOG PS, Eastern Cooperative Oncology Group performance status; EGFR, epidermal growth factor receptor; EORTC QLQ-C30, European Organisation for Research and Treatment of Cancer Quality of Life Questionnaire-Core 30; EORTC QLQ-LC13, European Organisation for Research and Treatment of Cancer Quality of Life Questionnaire-Lung Cancer 13; EQ-5D-5L, European Quality of Life-5 dimension-5 level; HGF, hepatocyte growth factor; IRC, independent review committee; LbX, liquid biopsy; MET, mesenchymal-epithelial transition factor; *MET*ex14, *MET* exon 14; NCI-CTCAE, National Cancer Institute Common Terminology Criteria for Adverse Events; NSCLC, non-small cell lung cancer; OS, overall survival; PFS, progression-free survival; QD, once daily; RECIST, Response Evaluation Criteria in Solid Tumors; TBx, tissue biopsy.

Safety and Patient-Reported Outcomes with Tepotinib in Patients with *MET*ex14 Skipping NSCLC: ≥3-years Follow-Up of VISION

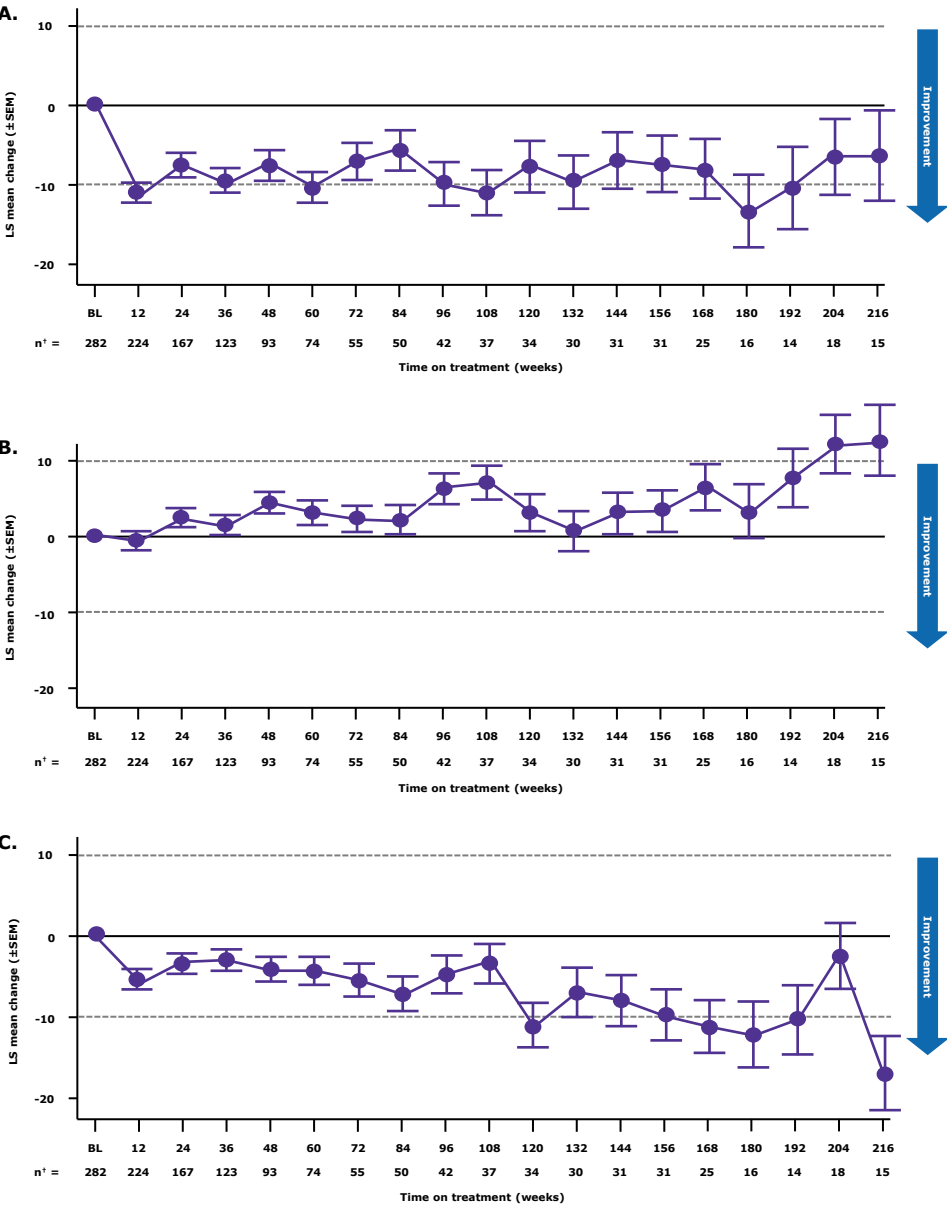
Enriqueta Felip¹, Roberto Ferrara^{2,3}, Remi Veillon⁴, Xiuning Le⁵, Egbert F. Smit⁶, Julien Mazières⁷, Alexis B. Cortot⁸, Jo Raskin⁹, Michael Thomas^{10,11}, **Niels Reinmuth**¹², James Chih-Hsin Yang¹³, Myung-Ju Ahn¹⁴, Jun Zhao¹⁵, Frank Griesinger¹⁶, Santiago Viteri¹⁷, Erica Velthuis¹⁸, Chris Pescott¹⁹, Andreas John²⁰, Rolf Bruns²¹, Paul K. Paik²²

¹Department of Oncology, Vall d'Hebron Institute of Oncology (VHIO), Barcelona, Spain; ²Fondazione IRCCS Istituto Nazionale dei Tumori di Milano, Milan, Italy; ³Università Vita-Salute San Raffaele Milano, Milan, Italy; ⁴CHU Bordeaux, service des maladies respiratoires, Bordeaux, France; ⁵Department of Thoracic Head and Neck Medical Oncology, The University of Texas MD Anderson Cancer Center, Houston, TX, USA; ⁶Department of Pulmonary Diseases, Leiden University Medical Centre, Leiden, Netherlands; ⁷CHU de Toulouse, Université Paul Sabatier, Toulouse, France; ⁸Univ. Lille, CHU Lille, CNRS, Inserm, Institut Pasteur de Lille, UMR9020 - UMR-S 1277 - Canther, F-59000 Lille, France; ⁹Department of Pulmonology and Thoracic Oncology, Antwerp University Hospital (UZA), Edegem, Belgium; ¹⁰Department of Thoracic Oncology, Thoraxklinik, Heidelberg University Hospital and National Center for Lung Research (DZL), Heidelberg, Germany; ¹¹Translational Lung Research Center Heidelberg (TLRC-H), Member of the German Center for Lung Research (DZL), Heidelberg, Germany; ¹²Häkelgasse Clinics, Munich-Garching, Department of Thoracic Oncology, Garching, Germany; ¹³Department of Medical Oncology, National Taiwan University Cancer Center, Taipei, Taiwan; ¹⁴Section of Hematology-Oncology, Department of Medicine, Samsung Medical Center, Sungkyunkwan University School of Medicine, Seoul, South Korea; ¹⁵Key Laboratory of Carcinogenesis and Translational Research (Ministry of Education (Beijing)), Department of Thoracic Oncology, Peking University Cancer Hospital and Institute, Beijing, China; ¹⁶Plus-Hospital, University Medicine Oldenburg, Department of Hematology and Oncology, University Department Internal Medicine-Oncology, Oldenburg, Germany; ¹⁷Instituto Oncológico Dr Rosell, Hospital Universitario Dexeus, Grup Quirón Salut, Barcelona, Spain; ¹⁸Global Program Safety Lead, Merck KGaA, Schiphol-Rijk, Netherlands, an affiliate of Merck KGaA; ¹⁹Global Value Demonstration, Merck Healthcare KGaA, Darmstadt, Germany; ²⁰Global Clinical Development, Merck Healthcare KGaA, Darmstadt, Germany; ²¹Department of Biostatistics, Merck Healthcare KGaA, Darmstadt, Germany; ²²Thoracic Oncology Service, Memorial Sloan-Kettering Cancer Center, New York, NY, USA.



SUPPLEMENTARY RESULTS

Supplementary Figure S2. LS mean change from baseline in EORTC QLQ LC-13 symptom scales* A. Cough, B. Dyspnea, C. Chest pain



*Visits with <10 patients are not presented. Dashed lines show minimal clinically important difference of ±10 points. *Number of patients who completed the questionnaire at each visit.