

This is a reprint from the European Lung Cancer Congress 2025 (ELCC 2025), which was originally presented in Paris, France on March 26 - 29, 2025; the references to “Merck” or “Merck KGaA” within refer to (1) Merck KGaA, Darmstadt, Germany; (2) an affiliate of Merck KGaA, Darmstadt, Germany; or (3) one of the businesses of Merck KGaA, Darmstadt, Germany, which operate as EMD Serono in the healthcare, MilliporeSigma in the life science and EMD Electronics in the electronics business in the U.S. and Canada.

There are two different, unaffiliated companies that use the name “Merck”. Merck KGaA, Darmstadt, Germany, which is providing this content, uses the firm name “Merck KGaA, Darmstadt, Germany” and the business names EMD Serono in the healthcare, MilliporeSigma in the life science and EMD Electronics in the electronics business in the U.S. and Canada. The other company, Merck & Co., Inc. holds the rights in the trademark “Merck” in the U.S. and Canada. Merck & Co., Inc. is not affiliated with or related to Merck KGaA, Darmstadt, Germany, which owns the “Merck” trademark in all other countries of the world.

Tepotinib in patients (pts) with MET exon 14 (METex14) skipping non-small cell lung cancer (NSCLC) from the VISION study: ≥3-year follow-up outcomes

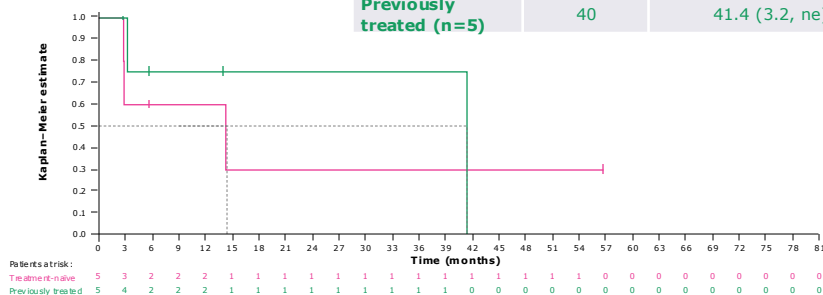
Julien Mazières¹, Remi Veillon², Alexis B. Cortot³, Roberto Ferrara⁴, Enriqueta Felip⁵, Marina Chiara Garassino⁶, Xiung Le⁷, Michael Thomas⁸, Hiroshi Saka⁹, Egbert F. Smit¹⁰, Jo Raskin¹¹, Santiago Viteri¹², James Chih-Hsin Yang¹³, Myung-Ju Ahn¹⁴, Yi-Long Wu¹⁵, Jun Zhao¹⁶, Vishal Ghorji¹⁷, Rolf Bruns¹⁸, Andreas Johné¹⁹, Paul K. Paik²⁰

¹CHU de Toulouse, Université Paul Sabatier, Toulouse, France; ²CHU Bordeaux, services maladies respiratoires, Bordeaux, France; ³Univ. Lille, CHU Lille, CNRS, Inserm, Institut Pasteur de Lille, UMR9102-UMR-S 1277-Canther, F-59000 Lille, France; ⁴Fondazione IRCCS Istituto Nazionale dei Tumori di Milano, Università Vita-Salute San Raffaele Milano, Milan, Italy; ⁵Department of Oncology, Vall d'Hebron Institute of Oncology (VHO), Barcelona, Spain; ⁶Department of Medicine, Section of Hematology/Oncology, Hopp Center for Biomedical Discovery, The University of Chicago, IL, USA; ⁷Department of Thoracic Head and Neck Medical Oncology, The University of Texas MD Anderson Cancer Center, Houston, TX, USA; ⁸Department of Thoracic Oncology, Thoracic and National Center for Thoracic Diseases at Heidelberg University Hospital, Heidelberg, Germany; ⁹Translational Lung Research Center Heidelberg (TRC-TH), Member of the German Center for Lung Research (DZL); ¹⁰Department of Thoracic Oncology, Apollo Central Hospital, Saitama, Japan; ¹¹Department of Pulmonary Diseases, Leiden University Medical Center, Leiden, The Netherlands; ¹²Department of Pulmonary and Thoracic Oncology, Antwerp University Hospital (UZ), Edegem, Belgium; ¹³Instituto Oncológico Dr. Roca, Hospital Universitario Dexeus, Grupo Quirón Salud, Barcelona, Spain; ¹⁴Department of Medical Oncology, National Taiwan University Cancer Center, Taipei, Taiwan; ¹⁵Section of Hematology-Oncology, Department of Medicine, Samsung Medical Center/Sungkyunkwan University School of Medicine, Seoul, South Korea; ¹⁶Guangdong Lung Cancer Institute, Guangdong Provincial People's Hospital & Guangdong Academy of Medical Sciences, Guangzhou, China; ¹⁷Key Laboratory of Carcinogenesis and Translational Research (Ministry of Education/Beijing), Department of Thoracic Oncology, Peking University Cancer Hospital and Institute, Beijing, China; ¹⁸First Teaching SK, Erlangen, Switzerland, an affiliate of Merck KGAA; ¹⁹Department of Biostatistics, Merck Healthcare KGAA, Darmstadt, Germany; ²⁰Global Clinical Development, Merck Healthcare KGAA, Darmstadt, Germany; ^{††}Thoracic Oncology Service, Memorial Sloan-Kettering Cancer Center, New York, NY, USA

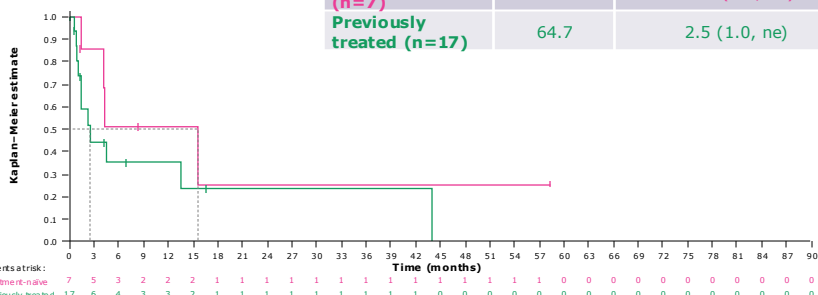
SUPPLEMENTARY RESULTS

Supplementary Figure S1. (A) DOR, (B) PFS, and (C) OS in patients from Cohort B, according to line of therapy

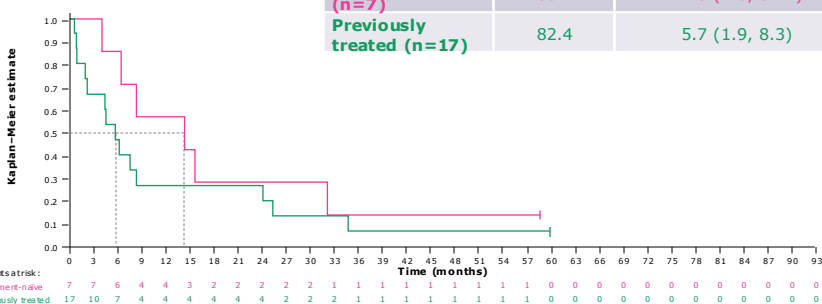
Line of therapy	Events, %	Median, months (95% CI)
Treatment-naïve (n=5)	60	14.3 (2.8, ne)
Previously treated (n=5)	40	41.4 (3.2, ne)



Line of therapy	Events, %	Median, months (95% CI)
Treatment-naïve (n=7)	57.1	15.6 (1.4, ne)
Previously treated (n=17)	64.7	2.5 (1.0, ne)



Line of therapy	Events, %	Median, months (95% CI)
Treatment-naïve (n=7)	85.7	14.3 (4.0, 32.1)
Previously treated (n=17)	82.4	5.7 (1.9, 8.3)



Abbreviations: CI, confidence interval; DOR, duration of response; OS, overall survival; PFS, progression-free survival.

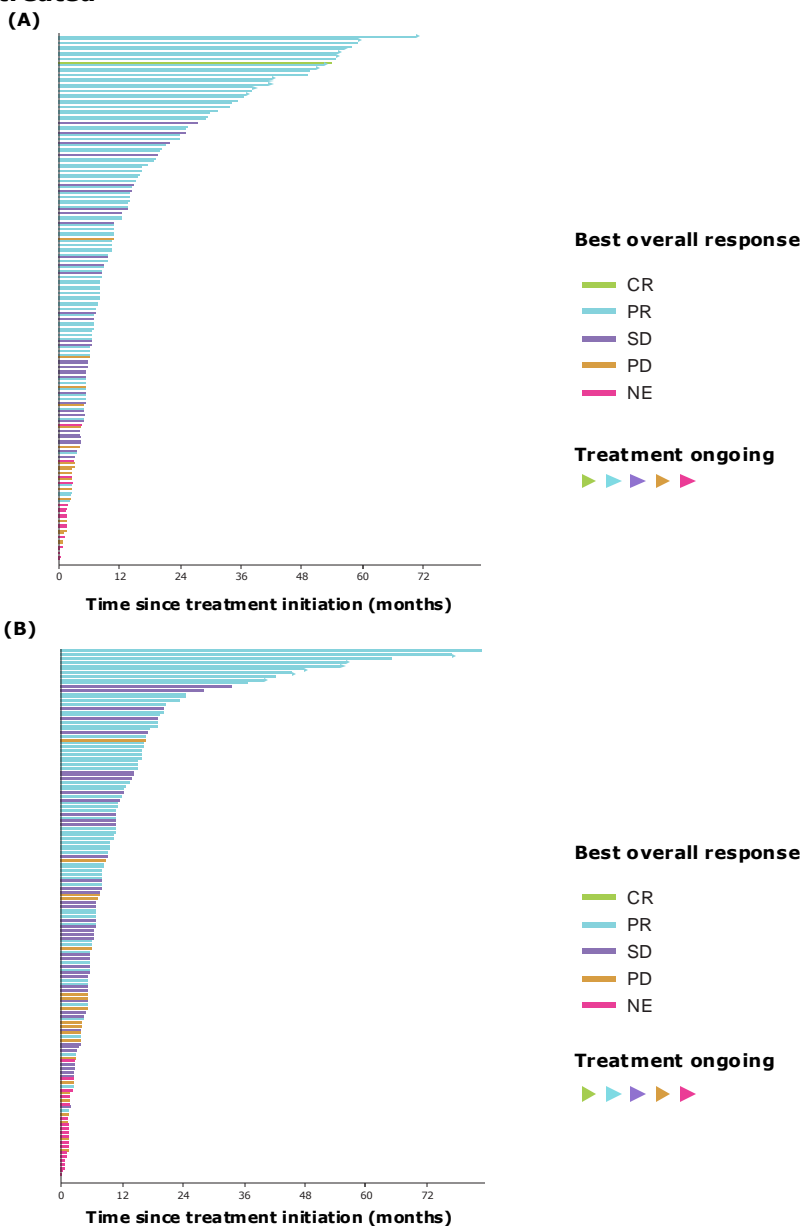
Tepotinib in patients (pts) with *MET* exon 14 (*MET*ex14) skipping non-small cell lung cancer (NSCLC) from the VISION study: ≥ 3 -year follow-up outcomes

Julien Mazières¹, Remi Veillon², Alexis B. Cortot³, Roberto Ferrara⁴, Enriqueta Felip⁵, Marina Chiara Garassino⁶, Xiuning Le⁷, Michael Thomas⁸, Hiroshi Saka⁹, Egbert F. Smit¹⁰, Jo Raskin¹¹, Santiago Viteri¹², James Chih-Hsin Yang¹³, Myung-Ju Ahn¹⁴, Yi-Long Wu¹⁵, Jun Zhao¹⁶, Vishal Ghori¹⁷, Rolf Bruns¹⁸, Andreas Johné¹⁹, Paul K. Paik²⁰

¹CHU de Toulouse, Université Paul Sabatier, Toulouse, France; ²CHU Bordeaux, services maladies respiratoires, Bordeaux, France; ³Univ. Lille, CHU Lille, CNRS, Inserm, Institut Pasteur de Lille, UMR9102-UMR-S 1277-Canther, F-59000 Lille, France; ⁴Fondazione IRCCS Istituto Nazionale dei Tumori di Milano, Università Vita-Salute San Raffaele Milano, Milano, Italy; ⁵Department of Oncology, Vall d'Hebron Institute of Oncology (VHIO), Barcelona, Spain; ⁶Department of Medicine, Section of Hematology/Oncology, Knapp Center for Biomedical Discovery, The University of Chicago, IL, USA; ⁷Department of Thoracic Head and Neck Medical Oncology, The University of Texas MD Anderson Cancer Center, Houston, TX, USA; ⁸Department of Thoracic Oncology, Memorial Sloan-Kettering Cancer Center for Thoracic Diseases at Heidelberg University Hospital, Heidelberg, Germany; ⁹Translational Lung Research Center Heidelberg (TRC-TH), Member of the German Center for Lung Research (DZL); ¹⁰Department of Thoracic Oncology, Agostini General Hospital, Salsomaggiore, Italy; ¹¹Department of Pulmonary Diseases, Leiden University Medical Center, Leiden, The Netherlands; ¹²Department of Pulmonary and Thoracic Oncology, Antwerp University Hospital (UZ), Edegem, Belgium; ¹³Instituto Oncológico Dr. Rosell, Hospital Universitario Dexeus, Grupo Quirón Salud, Barcelona, Spain; ¹⁴Department of Medical Oncology, National Taiwan University Cancer Center, Taipei, Taiwan; ¹⁵Section of Hematology-Oncology, Department of Medicine, Samsung Medical Center, Sungkyunkwan University School of Medicine, Seoul, South Korea; ¹⁶Guangdong Lung Cancer Institute, Guangdong Provincial People's Hospital & Guangdong Academy of Medical Sciences, Guangzhou, China; ¹⁷Key Laboratory of Carcinogenesis and Translational Research (Ministry of Education/Beijing), Department of Thoracic Oncology, Peking University Cancer Hospital and Institute, Beijing, China; ¹⁸Bees Fielding SA, Erlangen, Switzerland, an affiliate of Merck KGaA; ¹⁹Department of Biostatistics, Merck Healthcare KGaA, Darmstadt, Germany; ²⁰Global Clinical Development, Merck Healthcare KGaA, Darmstadt, Germany; ^{††}Thoracic Oncology Service, Memorial Sloan-Kettering Cancer Center, New York, NY, USA

SUPPLEMENTARY RESULTS

Supplementary Figure S2. Swimmer plots for duration of treatment in patients from Cohorts A+C: (A) treatment-naïve, (B) previously treated



Abbreviations: CR, complete response; NE, not evaluable; PD, progressive disease; PR, partial response, SD, stable disease.